



obstruction

- *defending player with the ball too close*
 - *arms up before correct distance*
- *impeding the movement (holding) of a player without the ball*

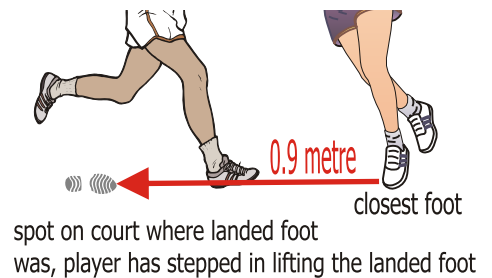
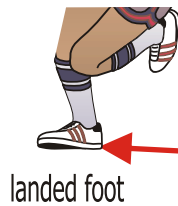
penalty pass or penalty pass or shot
 offending player stand beside out of play



3 feet / 90 cm / 0.9 m



Distance between grounded foot
 - first landed (on the ground or where it was grounded if it has been lifted) and the front foot of the player defending the ball, should be at least 90cm.



contact

player makes bodily contact (accidentally or deliberately) with opposing player that interferes with their play

penalty pass or penalty pass or shot

offending player stand beside out of play

if both players make bodily contact (accidentally or deliberately) with opposing player that interferes with their play

toss up

**ALL OTHER ON COURT INFRINGEMENTS ONLY INCUR A FREE PASS
 ie: NO PLAYER STANDING OUT**

